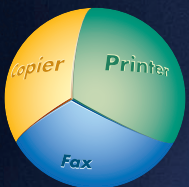


SHARP

AR-5127

Digital Laser Copier/Printer

Impressive Speed and Image Quality for the Digital Age



digital



COPY

PRINT
OPTION

FAX
OPTION

The AR-5127 utilises Sharp's expertise in digital imaging technology, bringing productive operation, superb image quality and ease-of-use to your workplace. Equipped with a high-performance 600-dpi laser engine and a full suite of digital enhancements, the AR-5127 gives you documents with outstanding detail and clarity — and at a speedy rate of up to 27 cpm/ppm. If you're looking for a productive document solution with integrated multiple functions all in one compact package, look no further than the AR-5127.



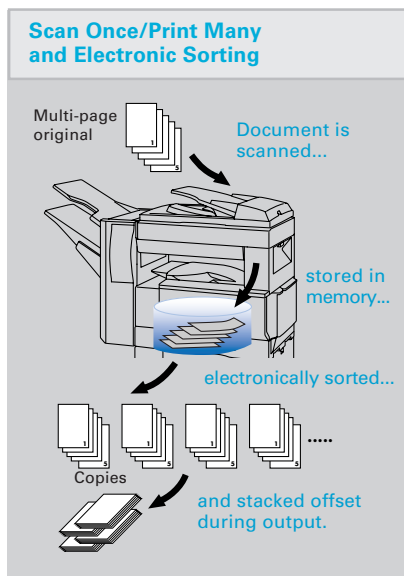
AR-5127 Digital Laser Copier/Printer

COPYING

Scan Once/Print Many and Electronic Sorting

The AR-5127 scans each page of a document in a single pass. Multiple copies are then quickly made from the machine's built-in memory. For further convenience, an Electronic Sorting* function allows the AR-5127 to automatically collate multiple sets of copies in order and stack them offset. This speedy process realises highly productive copying, even for large-volume documents.

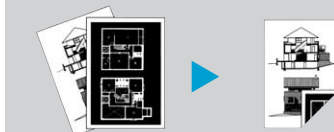
*Requires optional AR-EB4.



Built-in Duplex Module

The AR-5127 is equipped with a single-pass duplex module that provides speedy and reliable duplex copying, effectively reducing paper costs as well as saving filing space.

Duplex Copying



Superb Image Quality

Combining a 600-dpi laser engine with advanced digital imaging functions, the AR-5127 produces documents with unsurpassed quality. It automatically distinguishes between text, dot patterns and photographic images in original documents to produce copies with optimum contrast. Photo mode further ensures image clarity, giving excellent renditions of photographs, illustrations and graphics.

Productivity Enhancing Options

MAX
2,100
Sheets

For even more copying efficiency, the AR-5127 can be equipped with a range of productive options. The optional RSPF (reversing single pass feeder) can automatically feed in and make copies from a stack of up to 40 single- or two-sided originals, eliminating the tedious task of placing and turning over each page by hand. An SPF (single pass feeder) is also available. With the optional Staple Finisher, the AR-5127 can staple sets of documents up to A3 in size and up to 30 pages in length. The AR-5127 can also accommodate extra paper drawers for a large total paper capacity of up to 2,100 sheets.



Versatile Editing Functions

The AR-5127 is standard equipped with Dual Page Copy Mode, B&W Reverse and XY Zoom. Additional image editing functions (marked with * on the right) are available with the optional AR-EB4 upgrade.



B&W Reverse



XY Zoom



Dual Page Copy Mode



Rotation Copy*



2-in-1/4-in-1 Copy*



Margin Shift*



Centre Erase*



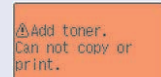
Edge Erase*

3-Colour Backlit LCD

In addition to the logically designed operation panel, the AR-5127 is equipped with an informative LCD panel that illuminates in one of three different colours: green for "ready", yellow for "warning", and orange for any errors. At a glance, you'll know the status of the machine, even from a distance. Plus it features an intuitive graphical user interface that offers step-by-step guidance through various operations and functions.

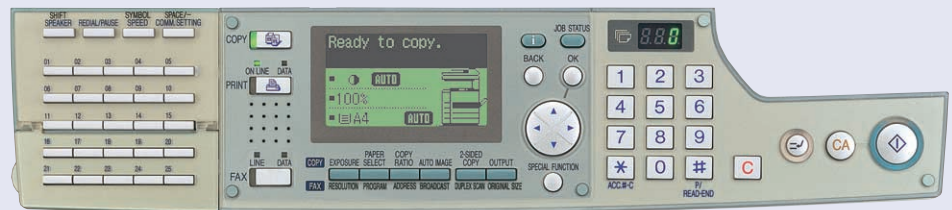


Yellow indicates a warning



Orange alerts you of an error

Green means "ready to copy"



PRINTING (option)

RIP Once/Print Many for Efficient Printing

When equipped with the AR-EB4 Dual Function Board, the AR-5127 becomes a high-speed laser printer, allowing you to make high-quality documents right from your desktop. Featuring Sharp Printer Language with Compression (SPLC) and RIP Once/Print Many printing, the

AR-5127 stores downloaded print data in its internal memory for efficient processing, quickly freeing up your PC for other tasks.

Job Separator and Job Offset

The AR-5127 ensures your documents will stay neatly organized even when others are using the machine at the same time. A convenient Job Separator* outputs printed documents onto a separate tray, preventing them from getting mixed in with copies or faxes. And to make it easier to locate and retrieve your documents from the tray, the AR-5127's Job Offset** function stacks the print jobs slightly offset from one another.

*Requires optional AR-EB4 and AR-TR3.
**Requires optional AR-EB4.

*The AR-5127 can operate under Windows XP, although it has not yet received WHQL (Windows Hardware Quality Labs) certification.

**For PC network connection, a commercially available print server card must be supplied by the user. Ask your Sharp dealer for details.

Productive Printing Functions

The AR-5127 offers a host of convenient printing functions, taking your office productivity even further. The N-up function allows you to place up to four pages of a document together on a single sheet to save printing costs. The Fit to Page function saves you time by automatically selecting the appropriate reduction/enlargement ratios to match the selected paper size. And an optional Staple Finisher gives you powerful finishing capabilities for your documents.

Total Printing Control from a PC



Example: Printing out 5 sets of a multi-paged document



Compressed data is sent once from PC



Data is stored in memory RIP once/print many



Pages are electronically sorted, printed out and stapled



5 sets of stapled documents, ready to use!

Support for Most Windows® Operating Systems

The AR-5127 can be used with most Windows® operating systems, including Windows® 95/98/Me, Windows NT® 4.0, Windows® 2000 and Windows® XP*. It also supports 10Base-T/100Base-TX networks**.

OTHER OUTSTANDING FEATURES

- Wide zoom range from 50 to 400% (25 to 400% with AR-EB4)
- Auto paper/magnification selection
- Toner Save mode

FAXING (option)-

High-Speed Operation

The AR-FX4 Fax Expansion Kit turns the AR-5127 into a Super G3 fax featuring a fast 33.6 Kbps modem. Using JBIG data compression, the AR-5127 can send an A4 (8 1/2" x 11") size page in under 3 seconds*. This, together with quick on-line transmission, greatly reduces the overall time it takes to send faxes.

*Based on ITU-T test chart No. 1 at standard resolution. Data transmission time only; does not include protocol transmission time.



350-Number Auto Dialling

The AR-5127 stores up to 50 numbers for one-touch connections and 300 numbers for three-digit speed dialling.

F-Code Communication

Conforming to the ITU-T F-Code (sub-address and passcode) standard, the AR-5127 is capable of F-Code confidential communication, F-Code relay request transmission and F-Code memory polling with other fax machines regardless of the manufacturer or model.

Duplex Scanning

When equipped with the optional RSPF, the AR-5127 can automatically scan both sides of a two-sided document. Once scanned, the pages are sorted in memory and transmitted in the proper order.

Quick On-Line Transmission

The AR-5127 starts dialling and transmitting a multi-page document as soon as the first page is scanned into memory. This greatly reduces the overall time it takes to send the document.

AR-5127 Digital Laser Copier/Printer

Specifications

GENERAL

Type	Desktop
Copy system	Dry, electrostatic transfer system
Paper size	Max. A3 (11" x 17"), min. A6R (5 1/2" x 8 1/2")
Paper capacity	1,100 sheets (500 x 2 + 100), expandable up to 2,100 sheets with options
Copy/print speed (max.)	27 cpm/ppm (A4 size, 8 1/2" x 11")
Memory*1	16MB, upgradeable to 272MB with options
Warm-up time*2	Approx. 40 seconds
First copy time*2	Approx. 4.8 seconds (A4 size, 1st paper tray)
Power requirements	Rated local AC voltage $\pm 10\%$, 50/60 Hz
Power consumption	Max. 1.2 kW
Dimensions (W x D x H)	628 x 585.5 x 673 mm (24 26/32" x 23 3/64" x 26 1/2")
Weight	Approx. 48.8 kg (107.5 lbs)

PRINTER (optional AR-EB4 Dual Function Board required)

Resolution	600 dpi
Interface	USB and IEEE 1284 parallel port
Supported OS	Windows® 95/98/Me, Windows NT® 4.0, Windows® 2000, Windows® XP
PDL (emulation)	Sharp Printer Language with Compression (SPLC)
Printer features	N-up (2/4), fit to page, job offset

*1: This memory is available with the optional AR-EB4 and works for copying and printing.

*2: At rated voltage, 20°C (68°F), 65% RH.

*3: Based on ITU-T test chart No. 1 at standard resolution in Super G3 mode, 33,600 bps, JBIG compression.

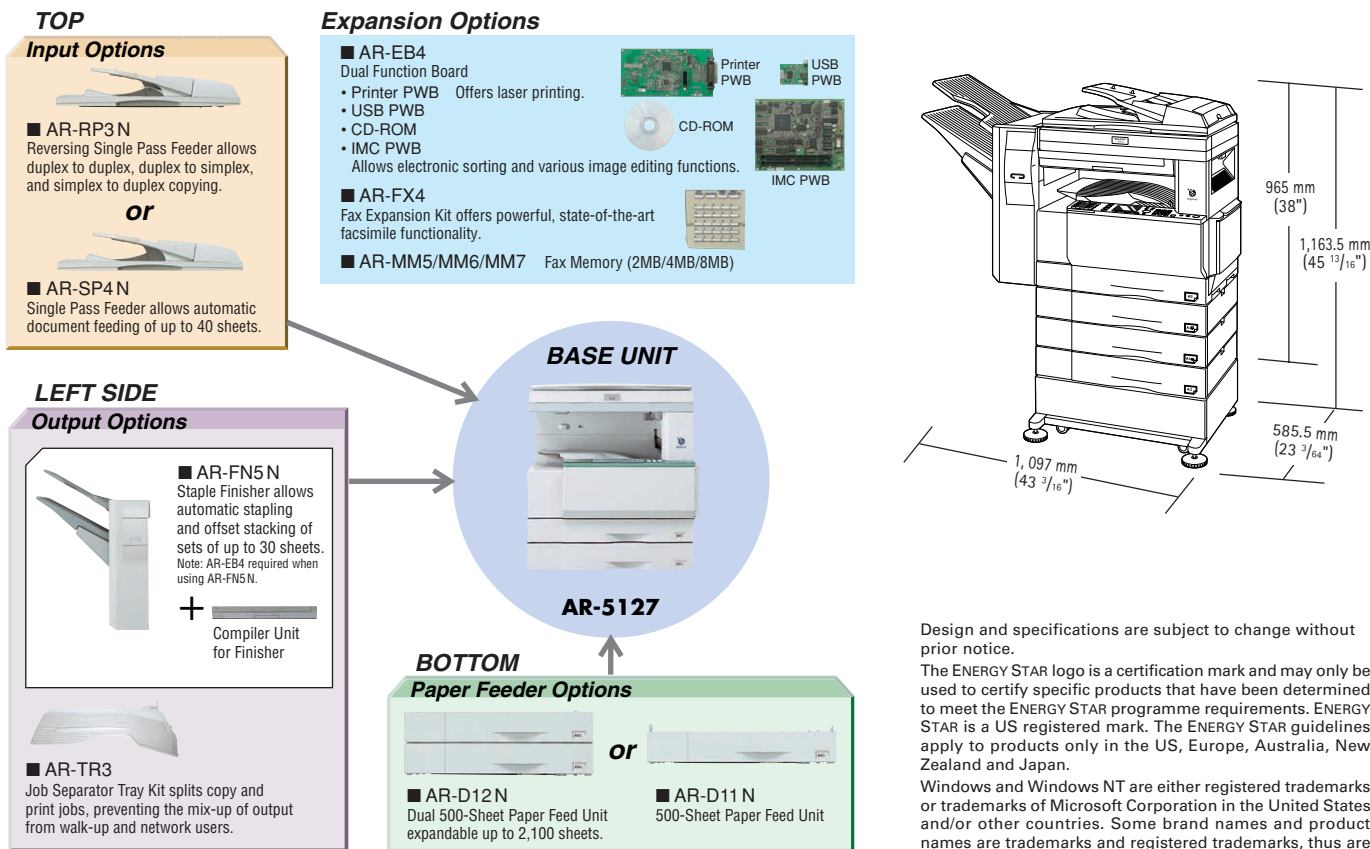
COPIER (optional AR-EB4 Dual Function Board required for some features)

Original size	Max. A3 (11" x 17")
Continuous copy	Max. 999 copies
Resolution	Print: 600 dpi Scan: 400 dpi
Zoom range	Standard: 50 to 400% with 9 preset ratios (4 reduction + 5 enlargement) With AR-EB4: 25 to 400% with 10 preset ratios (5 reduction + 5 enlargement)
Duplex module	Trayless 1 pass, switch back system
Duplex copy size	Standard: Max. A4 (8 1/2" x 11"), min. A5 (5 1/2" x 8 1/2") With AR-EB4: Max. A3 (11" x 17"), min. A5 (5 1/2" x 8 1/2")
Copier features	Standard: Auto paper selection, auto magnification selection, XY zoom, B&W reverse, dual page copy mode With AR-EB4: Electronic sorting, job offset, rotation copy, 2-in-1/4-in-1, margin shift, edge/centre erase

FACSIMILE (optional AR-FX4 Fax Expansion Kit required)

Compression method	MH/MR/MMR/JBIG
Communication protocol	Super G3/G3
Transmission time	Less than 3 seconds*3
Modem speed	33,600 bps to 2,400 bps with automatic fallback
Scanning resolution	Standard: 8 dots x 3.85 lines/mm (203 dots x 98 lines/inch) up to 16 dots x 15.4 lines/mm (406 dots x 392 lines/inch)
Memory	2MB expandable up to 10MB with options
Grayscale levels	256 levels

System Configuration



Design and specifications are subject to change without prior notice.

The ENERGY STAR logo is a certification mark and may only be used to certify specific products that have been determined to meet the ENERGY STAR programme requirements. ENERGY STAR is a US registered mark. The ENERGY STAR guidelines apply to products only in the US, Europe, Australia, New Zealand and Japan.

Windows and Windows NT are either registered trademarks or trademarks of Microsoft Corporation in the United States and/or other countries. Some brand names and product names are trademarks and registered trademarks, thus are the property of their respective owners.

Distributed by:

SHARP
SHARP CORPORATION OSAKA, JAPAN